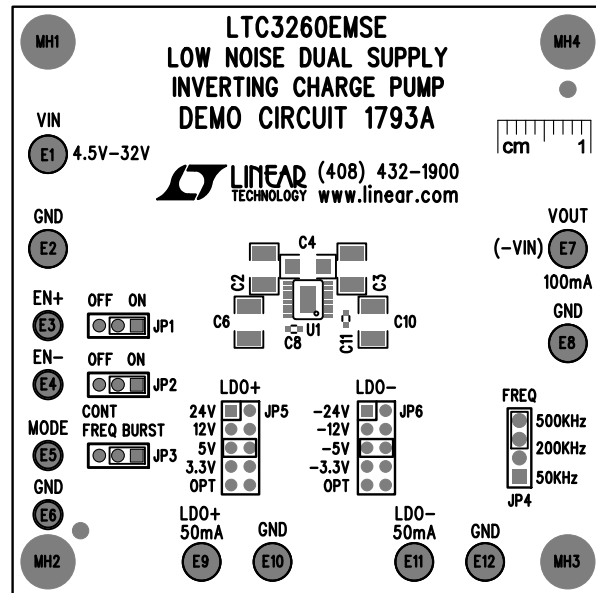


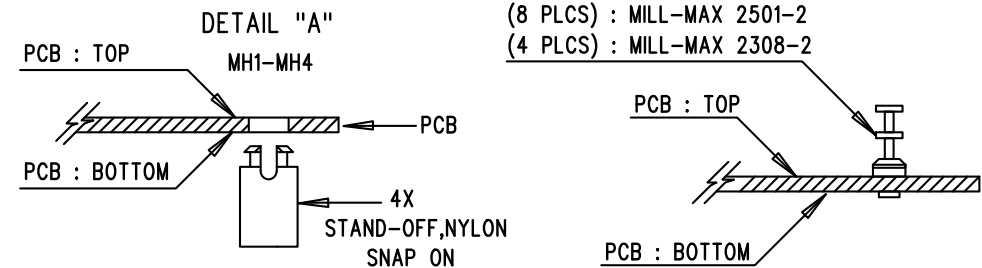
REVISION HISTORY				
ECO	REV	DESCRIPTION	APPR	DATE
-	2	PRODUCTION FAB	MARTY M.	03-12-12

## NOTES: UNLESS OTHERWISE SPECIFIED

1. WORKMANSHIP SHALL BE IN ACCORDANCE WITH IPC-A-610.
2. ASSEMBLY PROCESS SHALL INCLUDE: REFLOW SOLDER TOP SIDE SMD. MAXIMUM SOLDER TEMPERATURE IS 240 DEGREES CELCIUS.
3. PARTS TO OMIT WILL BE SPECIFIED ON THE BILL OF MATERIALS. LOCATIONS OF OMITTED PARTS SHALL BE FREE OF SOLDER. MASK THE SOLDER STENCIL WHERE SMT PARTS ARE OMITTED.
4. INSTALL SHUNTS AS SHOWN ON ASSY DRAWING.
5. DEPANELIZE BOARDS AFTER ASSEMBLY AND ROUTE-OUT THE BREAKOUT TABS ON FOUR SIDES OF THE BOARD EDGE.
7. INSTALL TURRETS AND 4 STAND-OFFS AT FOUR CORNERS AS SHOWN BELOW:



SEE DETAIL "A"



(8 PLCS) : MILL-MAX 2501-2  
(4 PLCS) : MILL-MAX 2308-2

## APPROVALS

PCB DES. NC  
APP ENG. MARTY M.



1630 MCCARTHY BLVD  
MILPITAS, CA 95035  
PH: (408)432-1900  
www.Linear.com  
LTC CONFIDENTIAL-  
FOR CUSTOMER USE ONLY

TITLE: TOP ASSEMBLY DRAWING:  
LOW NOISE DUAL SUPPLY INVERTING  
CHARGE PUMP

SIZE N/A IC NO. LTC3260EMSE  
DEMO CIRCUIT 1793A REV. 2

SCALE = NONE

FILENAME: DC1793A-2.PCB

SHT 1 of 2